

### Introduction to RESTART

RESTART (**R**eal **E**state **T**ransactions and **A**vailability **R**eporting **T**ool) is a system designed to provide real estate information to CB Richard Ellis professionals. Unlike its predecessors, PIMS and PRESTO, RESTART is based on distributed processing, so multiple locations can share each other's data using a replication process. These replication processes run independently and autonomously on each separate location.

RESTART supports multiple simultaneous users and is not dependent on the Local Access Network (LAN) for local use. It features ad-hoc querying and user-defined reports.

### System Requirements

#### Hardware

- IBM-compatible Pentium PC, 133 MHz or higher (266 MHz MMX recommended)
- 32MB RAM (96MB recommended)
- 20MB or more hard drive space, depending on the size of the database
- Minimum 800x600 display resolution

#### Software

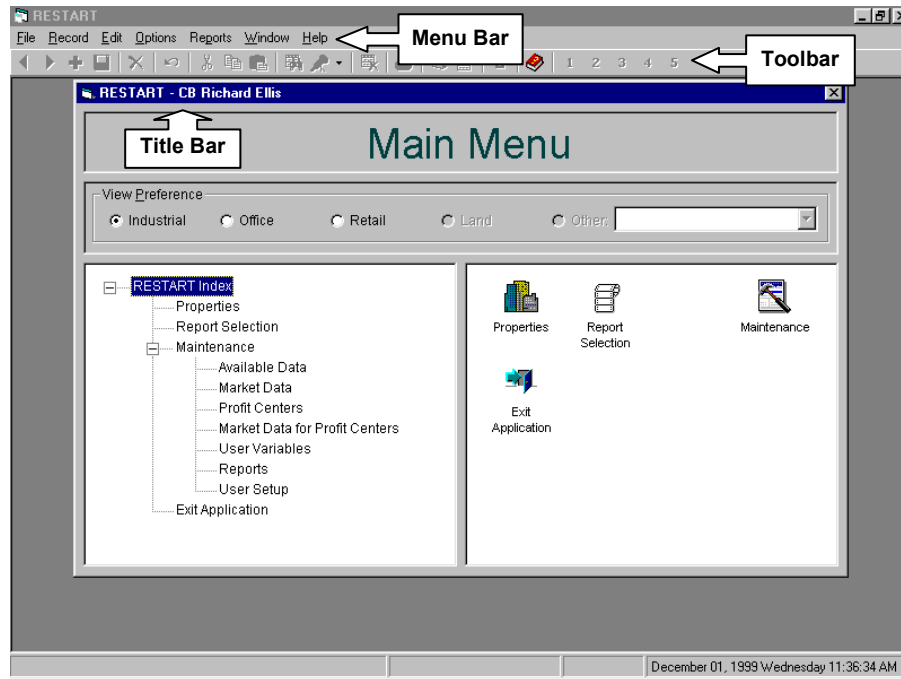
- Windows 95, 98 or NT4
- For Windows 95, Service Pack 1;  
For Windows 95/98, Dcom 98;  
For Windows NT4, Service Pack 3 or higher
- MS Office 97

### User Requirements

- Knowledge of Windows 95
- Working knowledge of commercial real estate property management
- For creating report profiles, basic SQL knowledge is helpful

## Navigating the System

### Main Menu



*The Main Menu.*

The Main Menu allows you to navigate through RESTART screens in a way that is similar to how you navigate through your files using Windows Explorer.

The Main Menu window is comprised of the following areas:

- |                     |   |
|---------------------|---|
| Outline (left side) | This area displays RESTART screens in a tree-view format. The screens are arranged in logical groups that can be shrunk and expanded with a click of your mouse. A plus sign (+) to the left of a group indicates the group is expandable. Clicking the plus sign expands the group, and the plus sign becomes a minus sign (-). Clicking the minus sign shrinks the group. When you click a group, it is highlighted, and shortcut icons for its related screens display on the right side of the Main Menu. |
| Icons (right side)  | These icons provide shortcuts to the screens of the highlighted group in the outline. You can double-click any of these icons to display the associated screens.  |

You can return to the Main Menu from any RESTART screen by pressing [F9] or selecting **Window**, then **Main Menu** from the *menu bar* (see below).

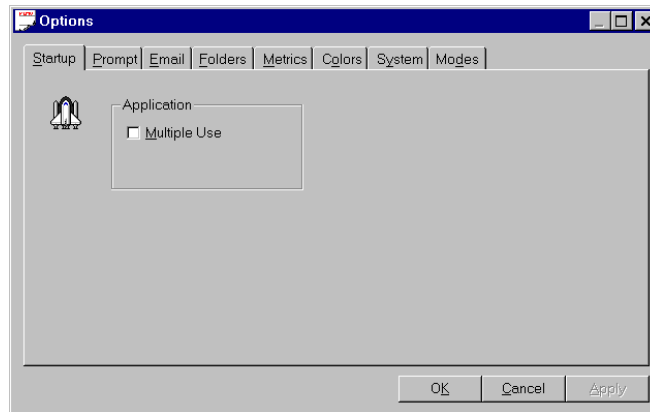
## Setting User Preferences

To set user preferences, select **Options** from the menu bar, then select **Preferences** (or press [Ctrl]+O simultaneously). The Options screen displays with multiple tabs, described below.

- To save your settings and close the Options window, click **OK**.
- To save your settings without closing the Options window, click **Apply**. (If you then click **Cancel**, all the settings you made before you clicked **Apply** will be saved.)

### Startup Tab

- Make sure that **Multiple Use** is *not checked*. If it is checked, it allows you to open more than one occurrence of RESTART at the same time, which can slow system performance due to large memory loss.

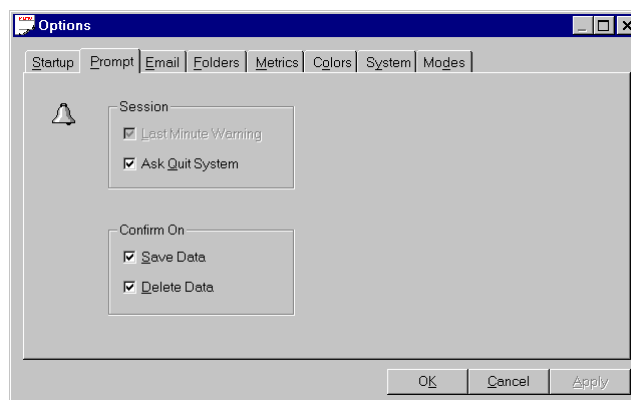


*Startup tab.*

### Prompt Tab

- Make sure the **Ask Quit System** and **Save Record** options are checked. The **Delete Data** option should be checked but disabled. The system will prompt you for confirmation before you save or delete a record, or exit the system.

**NOTE:** For security reasons, users cannot turn off the **Delete Data** prompt.



*Prompt tab.*

## Selecting Buildings (continued)

### Power Search

RESTART's **Power Search** tool allows you to search on any field, combination of fields or multiple values.

There are three ways to access this tool:

- 1) If you selected it in the **Property Option** field on the Modes tab (page 3-6), the Power Search screen will automatically open when you select **Properties**.

- 2) Click once on the Power Search (filter) button in the toolbar.

**NOTE:** A drop-down list displays any available saved power searches. If you select a search from this list, that search will automatically run.

- 3) Select the menu option **Record**, then **Power Search**.

The screenshot shows the RESTART software interface for an industrial building. The window title is "RESTART - [Industrial Building]". The menu bar includes File, Record, Edit, Options, Reports, Window, and Help. The toolbar contains various icons, with the "Power Search" button highlighted by a callout box. The main form is divided into several sections:

- Address:** 2323, MAIN ST
- Profit Center:** ORANGE COUNTY SOUTH
- Property:** (Selected tab)
- 1. Location:**
  - Profit Center: ORANGE COUNTY SOUTH
  - Building Name: (empty)
  - Complex Name: IRVINE COMPLEX
  - Area: AIRPORT/COASTAL O.C.
  - Submarket: IRVINE BUSINESS COMP
  - Cross Street 1: VON KARMAN
  - Cross Street 2: (empty)
  - Street #1: 2323
  - Street #2: (empty)
  - Street Name: MAIN ST
  - City: IRVINE
  - State: CA
  - County: ORANGE
  - Zip: 92714
  - Country: (empty)
  - Map Key: (empty)
  - Point Indicator: G
  - Lat: 0.000000
  - Lon: 0.000000
- 2. Description:**
  - Prop/Dev Type: Manufacturing
  - Status: Existing
  - Class: (empty)
  - Tenancy Type: Multi
  - Building SF:
    - Gross: 259,139
    - Office: (empty)
    - Retail: (empty)
  - Site:
    - Acres: 10.0
    - Coverage: (empty)
    - Rail Served: Yes
  - Count:
    - Buildings: 1
    - Floors: 1
  - Construction:
    - Year Built: 1970
    - Month Built: (empty)
    - Year Renovated: (empty)
  - Construction Type: (empty)
  - Vacancy Index: Large
  - Owner User: (empty)
  - Building Comments:
    - 1. (empty)
    - 2. (empty)
    - 3. (empty)
    - 4. (empty)
    - 5. (empty)
    - 6. (empty)
- 3. Availability:** (empty)

The status bar at the bottom shows "1 of 1 records" and "December 02, 1999 Thursday 12:08:44 AM".

Although you can use transaction and tenant criteria as search criteria in power searches, the result set will be a list of properties matching your criteria, and will include all tenants and transactions associated with the properties. As an example, a search for transactions greater than 100,000 square feet will return only those property records which contain such transactions, but the records will also display all other transactions that have occurred at the property as well.

## Selecting Report Criteria

After you click the **Run** button on the Report Selection screen (page 5-4), the Report Filter screen displays.

	Left Par.	Field Name	Operand	Value	Right Par.	Concatenator
1						
2		Broker1Name	Parameter			
3		Broker1Phone	Parameter			
4		Broker2Name	Parameter			
5		Broker2Phone	Parameter			
6		Notes1	Parameter			
7		Notes2	Parameter			
8		Notes3	Parameter			
9		Show Details	Parameter	Yes		
10		Property Type	- (Equal to)			AND

*Report Filter screen.*

1. If you want to use the criteria you already selected in the Power Search, click **Use Filter** in the Filter Options box and select a filter from the drop-down list. Any criteria entered into the Report Filter will be additional criteria to the original Power Search.
2. You can run a new query by selecting **New Filter** in the Filter Options box and entering criteria in the rows that are not gray.
3. Enter information such as **Prepared for:** and **Presented to:** in the gray rows.
4. You can advance directly to the Print Selection screen by clicking the **Print** button; however, you will have the opportunity to sort your result set or eliminate buildings from printing.
5. To preview your search results before printing, click **Result Set**.