
Windows 95 TCP/IP Protocol Installation

NOTE: Before you start TCP/IP installation, please verify that you have the Windows 95 distribution CD or disk. This must be the complete Windows 95 installation, not an upgrade CD or disk set. Most OEM-installed Windows 95 personal computers have Windows 95 CAB files residing in c:\windows\options. If this applies to your PC, you do not need the Windows 95 CD.

1. From the Windows 95 Start menu, select **Settings**, then **Control Panel**.

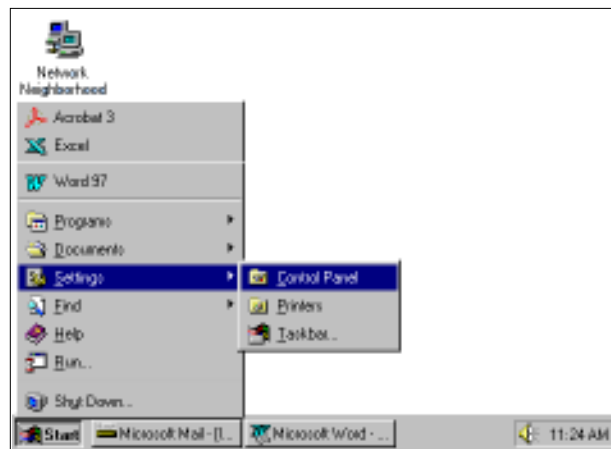


FIGURE 1: Windows 95 Start Menu with Settings|Control Panel selected

2. When the Control Panel displays, click **Network**.

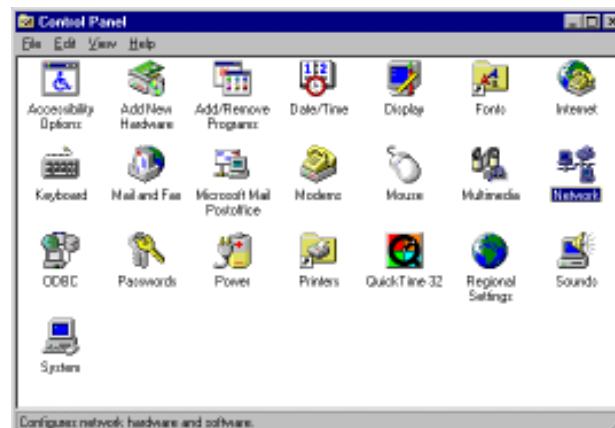


FIGURE 2: Control Panel with Network selected

3. The screen below displays the installed network components. Click the arrow buttons (▲▼) to scroll down to see if the TCP/IP is already installed. If TCP/IP is listed, proceed to Step 7. Otherwise, click the **Add** button.

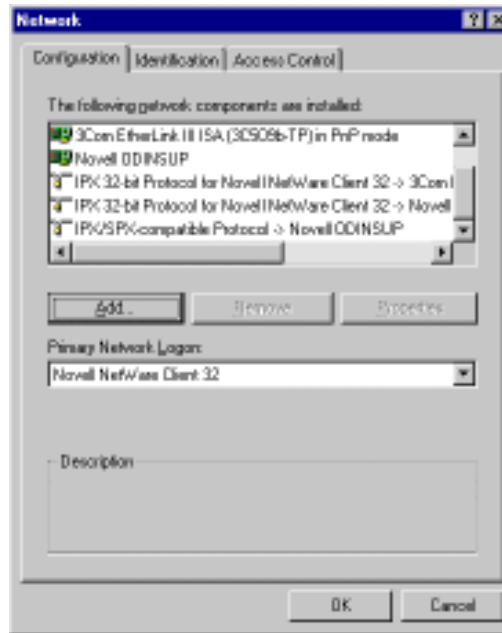


FIGURE 3: Network screen

4. The screen below displays. Select **Protocol** as the type of network component you want to install, then click the **Add** button.

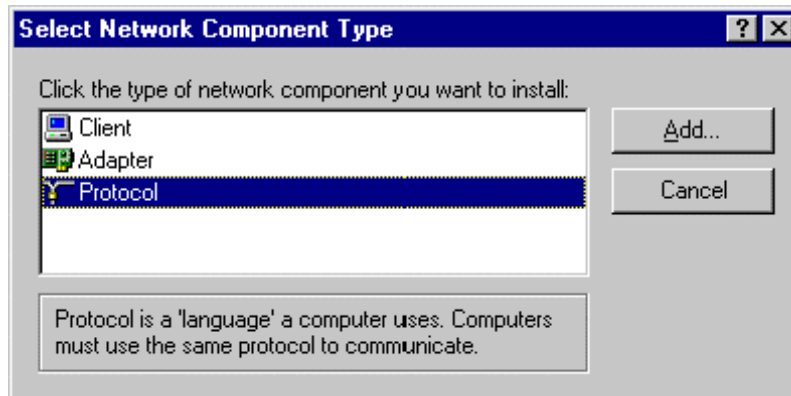


FIGURE 4: Select Network Component Type screen with Protocol selected

5. When the Select Network Protocol screen displays, select **Microsoft** in the Manufacturers column, and **TCP/IP** in the Network Protocols column. Next, click the **Have Disk** button.
 - If you do not have the directory `c:\windows\options\cabs`, click **OK**.

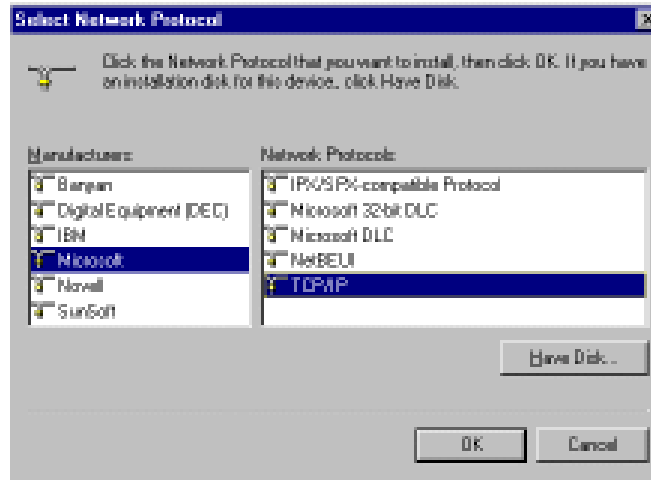


FIGURE 5: Select Network Protocol screen with Microsoft and TCP/IP selected

6. When the Install From Disk screen displays, type `c:\windows\options\cabs` in the Copy manufacturer's files from: field, then click the **OK** button.
 - If you do not have the directory `c:\windows\options\cabs`, click **OK**.

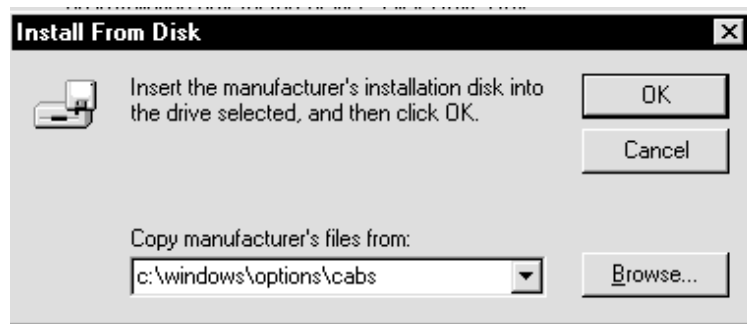


FIGURE 6: Install From Disk screen with `c:\windows\options\cabs` selected

- When the installation process is complete, you can start configuring TCP/IP. Select **TCP/IP -> Novell ODINSUP** and click the **Properties** button.

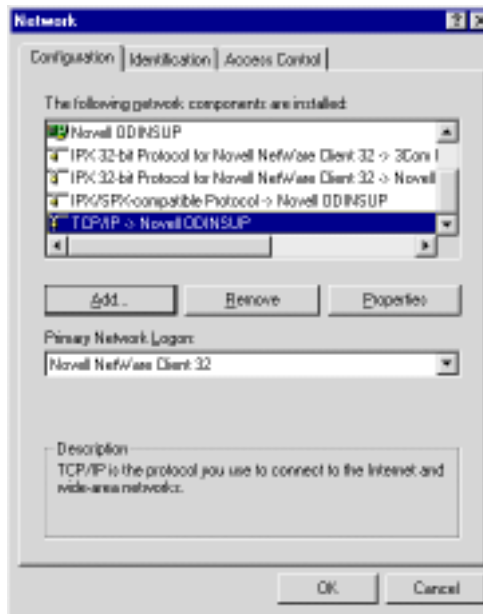


FIGURE 7: Network screen with TCP/IP selected

- When the TCP/IP Properties screen displays, verify that the option **Obtain an IP address automatically** is selected, then click the **OK** button.
 - If you are installing with Windows 95 disks, you will be asked to insert Disk 13 in the a: drive. Insert the disk and click **OK** to continue.



FIGURE 8: TCP/IP Properties screen with Obtain an IP address automatically selected

-
9. The System Settings Change pop-up window displays. Click **Yes** to restart your computer so the changes you made will take effect.

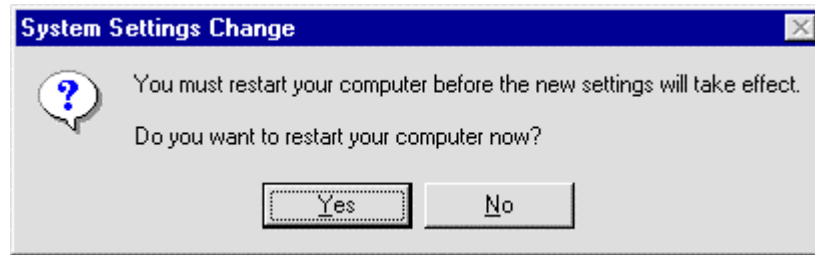


FIGURE 9: System Settings Change pop-up window

This completes the Windows 95 TCP/IP installation process.